

JOURNAL OF THE CSXT® HISTORICAL SOCIETY

____ Volume 3 Number 3 ____



CSXT ROAD & HIGH-RAIL VEHICLES

CSXTHS is not affiliated with CSX Transportation® and is a nonprofit corporation chartered under the laws of Kentucky.
CSX Transportation ® and its logos are used here within with the written permission of CSX Transportation. ®

PRESIDENT'S MESSAGE

While it is the train and yard crews that move the goods over CSXT's track, it is the Maintenance-of-Way crews that keep the track, road bed, signals, switches, sidings, bridges, crossings, and trestles in repair. Without the work undertaken daily by CSXT's Maintenance-of-way personnel, the ability of the railroad's trains to pick up and deliver goods to the marketplace would be placed in jeopardy. Within the following pages, we look at a number of the rubber tire vehicles that are used by CSXT to keep the steel wheels of its trains rolling over steel rails. I hope that both those interested in train operations and modeling will find the following of interest.

If you have not made your reservations for the CSXTHS 2015 Convention, you need to do it now. The Convention is June 4-7, 2015, at St. Albans, West Virginia. For more information on the convention, visit

<http://www.csxthsociety.org/meetings/2015convention/csxths2015conventionagendaaregistration.pdf>

We are seeking a location for our 2016 Convention. If you would like to host the 2016 Convention, send a proposal to csxths@fewpb.net

If you have not renewed your 2015 membership in CSXTHS, please do so now. Download the membership application at the link below and mark on it “**Renewal.**”

<http://www.csxthsociety.org/membership/csxthsocietywlogomembershipapplication201208219.pdf>

Remember that railroad property is Private Property. Expect a train at any time from any direction. Look, Listen, and Live

During the past three months, CSXTHS was contacted by two local historical societies seeking information on their local depot. In both cases we could only refer them to a fallen flag historical society.

We have started a conversation with C&OHS about storing the CSXTHS archives at their Clifton Forge, Virginia, library. Hopefully we will have some positive feedback concerning this proposal in the next Journal. CSXTHS is still accepting photos, slides, timetables, and other material related to CSXT.



On the cover and above is CSXT 94345, a track inspector truck.



A CSXT track inspection truck is seen near St. Albans, West Virginia.



Above and below: CSXT 109016, a "War Wagon" Signal Gang Truck, at Jeffersonville, Indiana.





CSXT 60223, a Train or Yard Master car, at Shelby Yard



CSXT 94212, a track inspector truck, at Shelby Yard



Above and below: CSXT 106030, a Maintenance-of-Way foreman truck, is seen at Jeffersonville, Indiana. The sign on the truck's rear door reads, "Safety starts with an action not a reaction" "Western Region Construction." Under the eagle's feet is the logo of the Monon Railroad, a fallen flag railroad incorporated into CSXT.





CSXT 94212, a track inspection truck, is seen at Shelbiana, Kentucky.



A Track Inspector truck is parked at Shelby Yard.



Above and below: CSXT 476176 is a Section Gang or Basic Force Truck.





CSXT 75308 is a welding truck.



CSXT 240057, a rail welding truck



A CSXT Maintenance-of-Way truck used by track gangs to change out broken rails.



CSXT 306020 is a Heavy Equipment, Stack Bed, Gang Truck.



CSXT 70711, a three way dump truck, can dump to the rear or to either side.



CSXT 306020, a Maintenance-of-Way Gang truck, is seen at Paintsville, Kentucky.



CSXT 75308, a welding truck



CSXT 50134, a yard truck used at Birmingham, Alabama, to carry FREDs to trains leaving the yard and to retrieve FREDs from trains arriving in the yard.

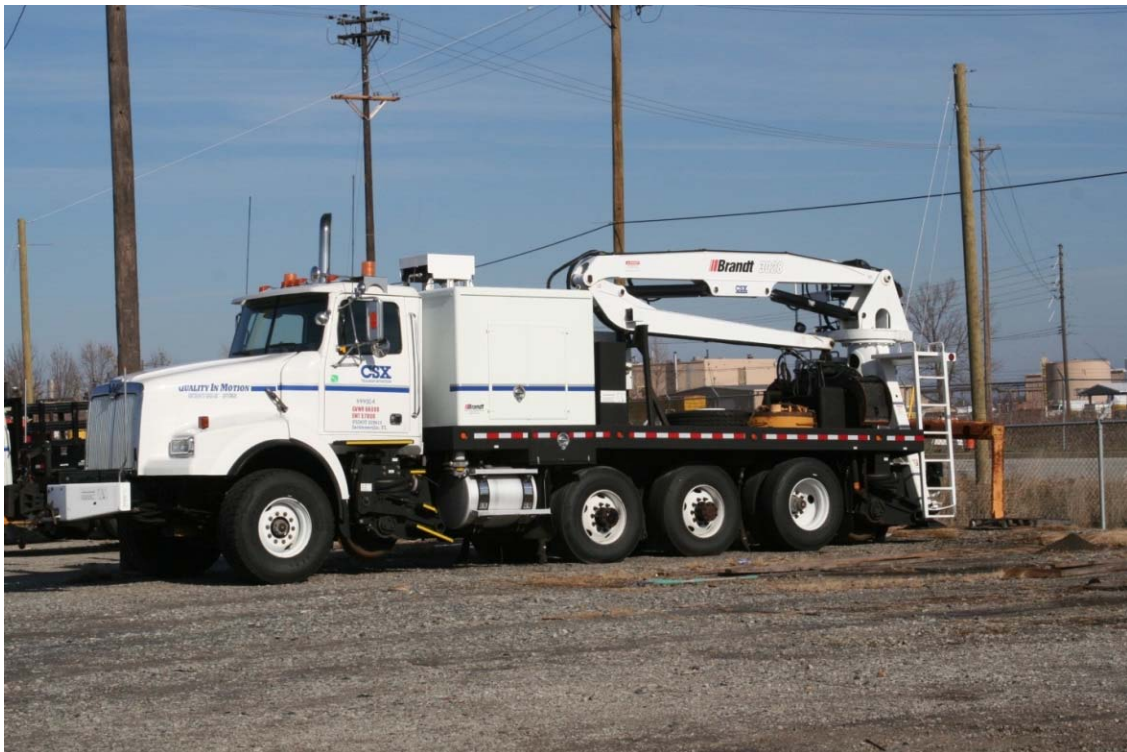


Above and below: CSXT 620055, a grapple truck used by Maintenance-of-Way gangs for lifting and carrying ties or rails. She is seen near Columbus, Ohio.





CSXT 486002, a Signal Gang bucket truck



CSXT 999004 Brandt Truck with boom used by Maintenance-of-Way.



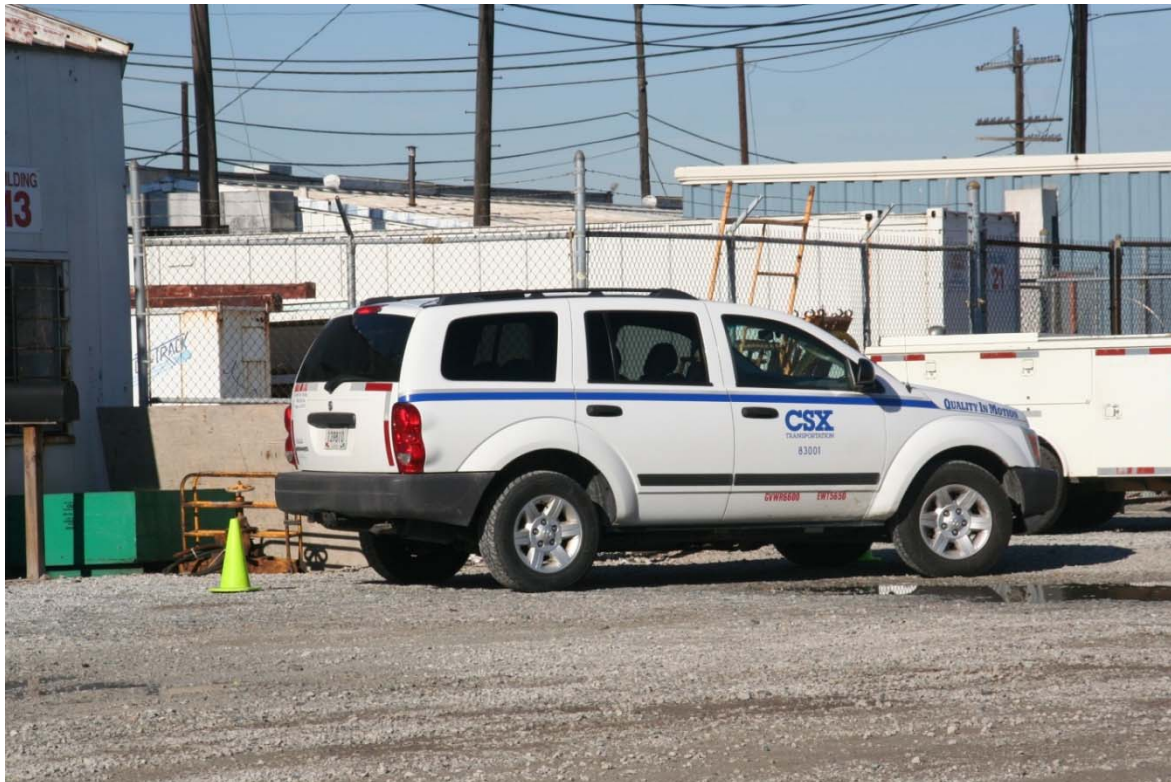
CSXT 393009, a fuel truck used for refueling track gang equipment.



CSXT 108033, an Electrician's Truck, is seen at Queensgate.



CSXT 48062, an Electrician's Truck, is seen at Queensgate.



CSXT 83001, a Supervisor or office pool car



CSXT 96193, a carpenter truck used by a Bridge Team



CSXT 75305 is a Welder Truck.



CSXT 139034 above and CSXT 139013 below, area road mechanic truck used for repairing Maintenance-of-Way equipment.





CSXT 94030 is a track inspection truck.



CSXT 80121 is a general purpose truck often referred to as a Flagman Truck.



Above and below: CSXT 450056, a dump truck with a trailer in tow that is carrying a back hoe, is seen at Paintsville, Kentucky.





CSXT backhoe on trailer at Paintsville, Kentucky



A CSXT track gang truck, with boom, is seen at Cincinnati, Ohio, on the approach to the Ohio River Bridge.



Above and below: A Little Giant Cable Clutch Lifting Crane at Osborn Yard, Louisville, Kentucky





Above and below: A CSXT boom truck is seen at Queensgate Yard heading north to deliver ties to a track gang working on one of the yard tracks.





Above and below: CSXT 999011 is a Brandt Truck. It is used by Section Gangs for track repair but can also be used for moving freight cars. Here CSXT 999011 is moving a string of wood chip hoppers at Cumberland, Maryland.

