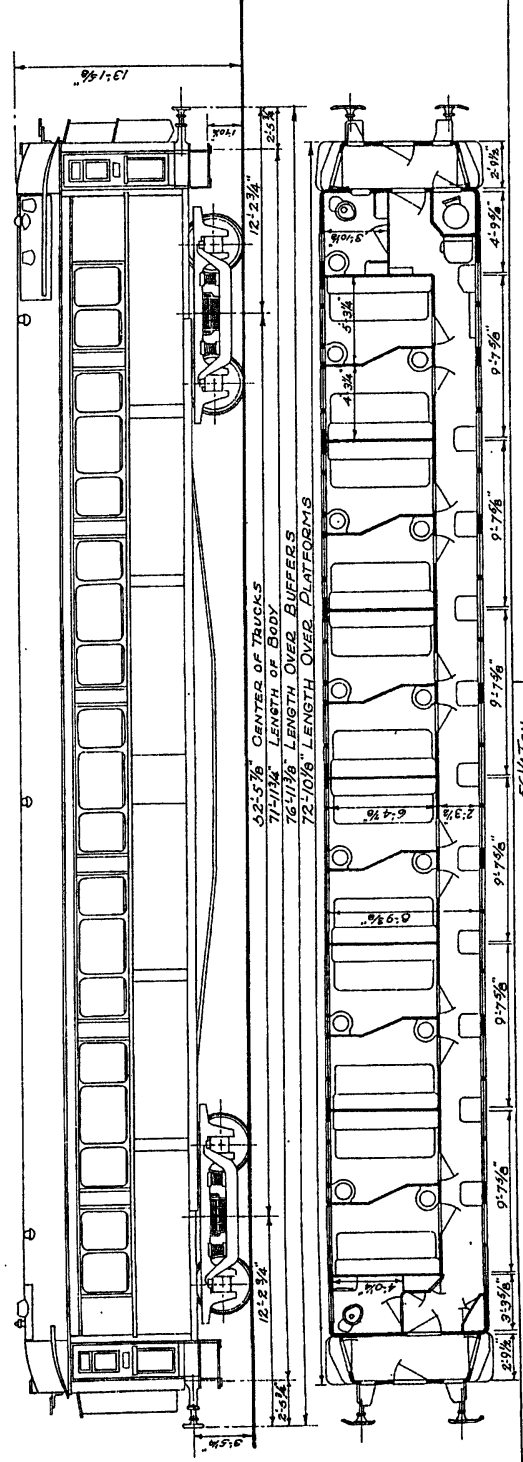


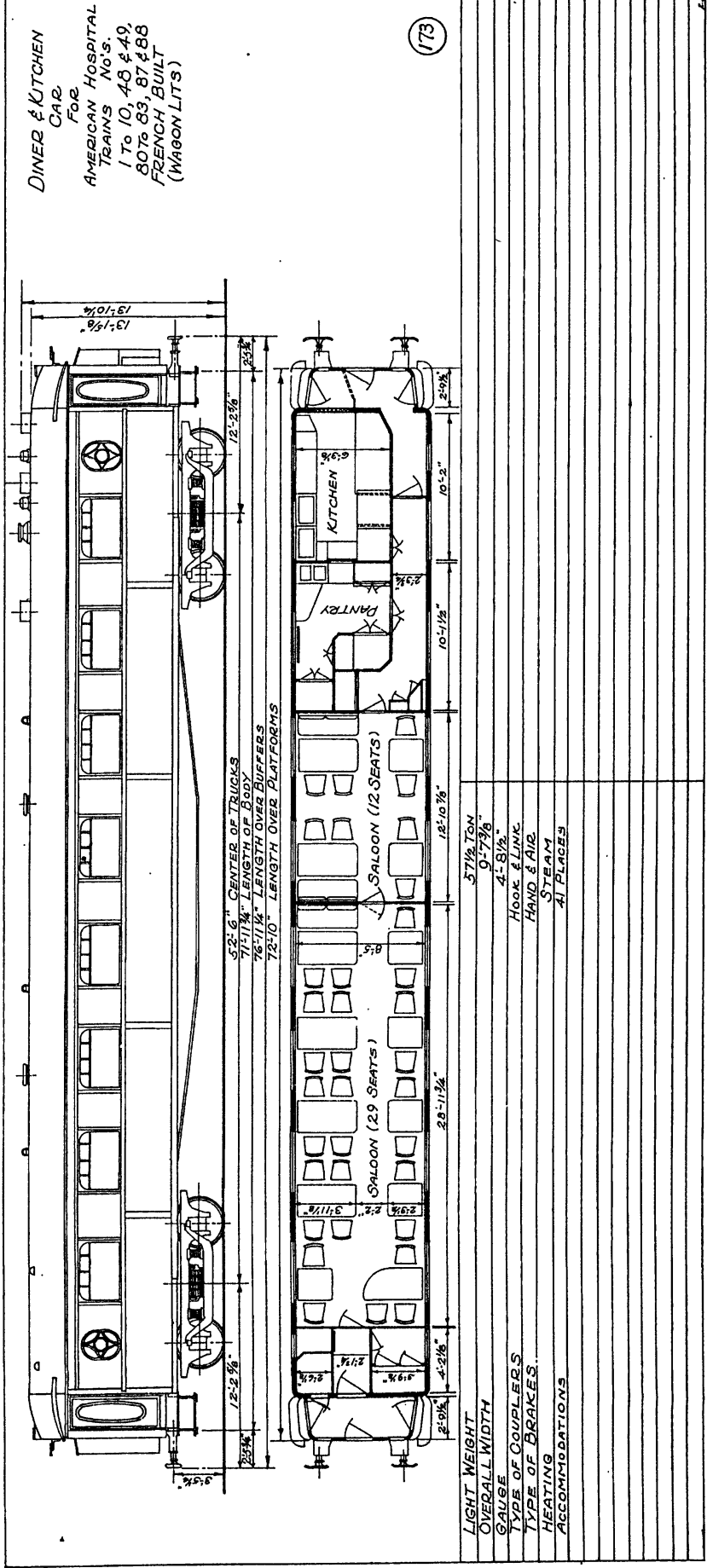
OFFICER STAFF
 CAR
 FOR
 AMERICAN HOSPITAL
 TRAINS No.S.
 1 To 10, 48 & 49,
 80, 83, 87 & 88
 FRENCH BUILT
 (WAGON LITS)

172



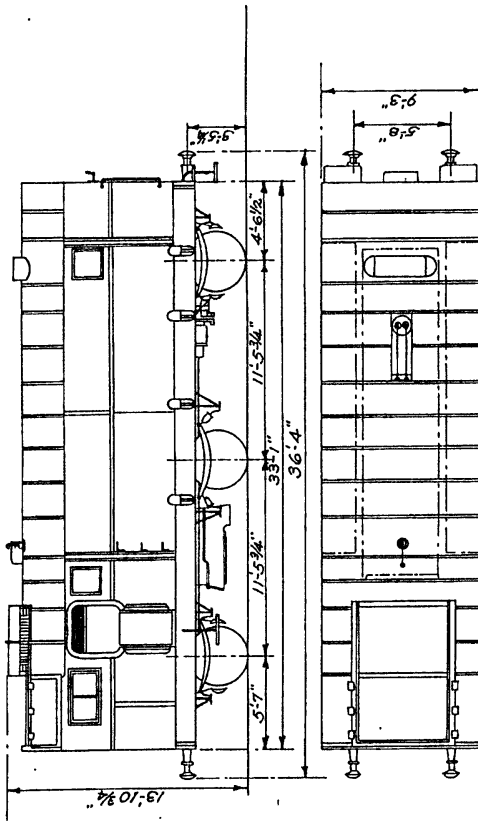
LIGHT WEIGHT
 OVERALL WIDTH
 GAUGE
 TYPE OF COUPLERS
 TYPE OF BRAKES
 HEATING
 ACCOMMODATIONS

56 1/2 TON
 9'-7 3/8"
 4'-8 1/2"
 HOOK & LINK
 HAND & AIR
 STEAM
 24 BERTHS



BOILER
 CAR
 FOR
 AMERICAN HOSPITAL
 TRAINS NOS.
 176, 10, 48 & 49
 8076 83, 87 & 88
 PLENCH, BUILT
 (S.N.C.F.)

174



LIGHT WEIGHT

OVERALL WIDTH

GAUGE

TYPE OF COUPLES

TYPE OF BRAKES

9'-3"

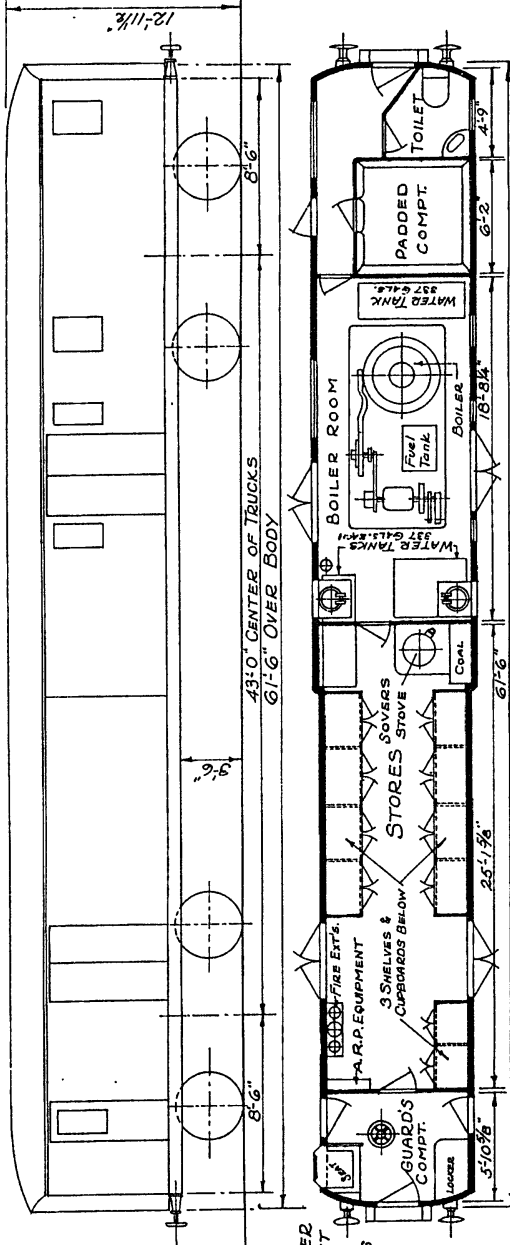
4'-8 1/2"

HOOK & LINK

HAND BRAKE

BRAKE, STORES &
 BOILER CAR - G
 FOR
 AMERICAN HOSPITAL
 TRAINS
 No. S.
 12, 13, 14, 15, 16,
 17, 18, 19, 20, 21,
 22, 24, 27, 31, 33,
 36, 37, 38, 39, 40,
 41, 44, 46, 47
 BRITISH BUILT

(175)



WATER CAPACITY - 1000-GAL.'S-BOILER
 49" - TOILET
 A.R.P. EQUIPMENT
 RESCUE EQUIPMENT IN GUARD'S
 COMPARTMENT.
 ACCOMMODATION -
 1-PADDED COMPARTMENT

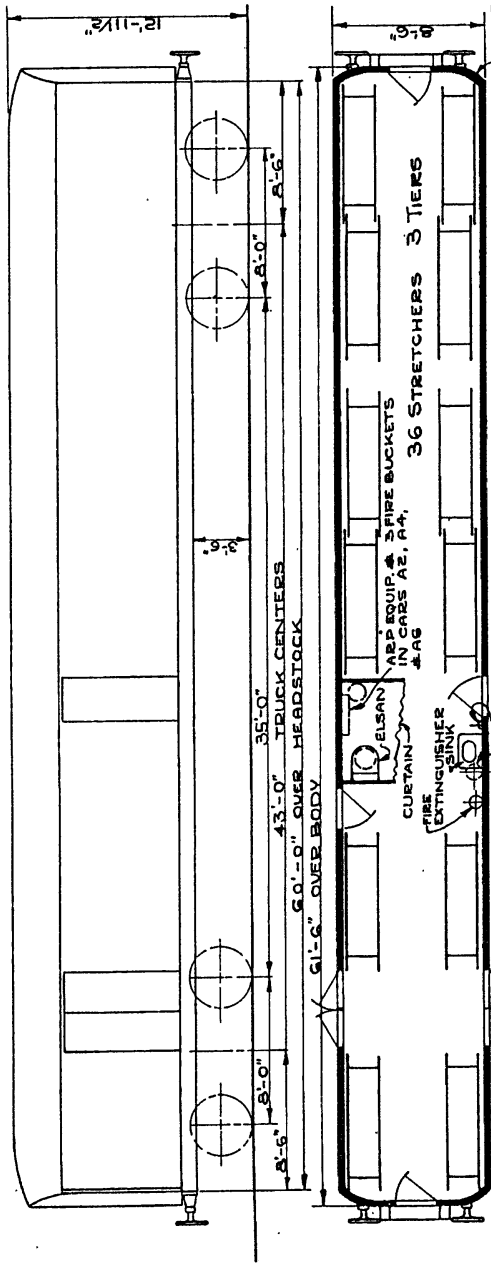
LIGHT WEIGHT	47.70N
OVERALL WIDTH	9'-0"
GAUGE	4'-5 1/2"
TYPE OF COUPLERS	HOOK & LINK
TYPE OF BRAKES	HAND & AIR
HEATING	STEAM

C

C

C

WARD CAR A1-A6
FOR
AMERICAN HOSPITAL
TRAINS No's 12,13,14,
15,16,17,18,19,20,21,22,
24,27,31,33,36 37 38 39
40,41,44,46,47.
BRITISH BUILT



LIGHTWEIGHT
OVERBALL WIDTH
GUAGE
TYPE OF COUPLERS
TYPE OF BRAKES
HEATING
A.R.P. EQUIP. IN CARS
WATER CAP.
ACCOMMODATION

WESTINGHOUSE

8'-6"

4'-8 1/2"

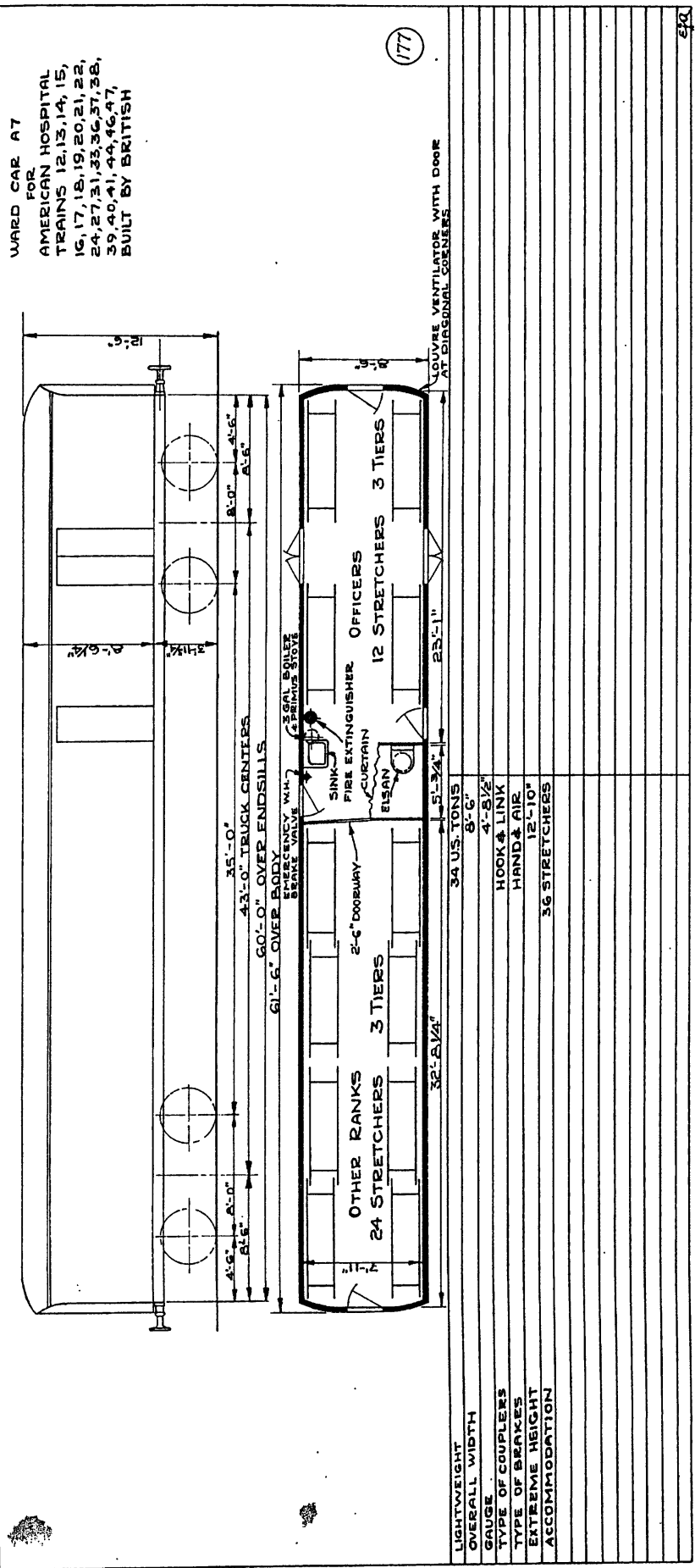
HOOK & LINK

HAND & AIR

STEAM

150 GALS

STRETCHER CASES 30



WARD CAR A7
 FOR
 AMERICAN HOSPITAL
 TRAINS 12, 13, 14, 15,
 16, 17, 18, 19, 20, 21, 22,
 24, 27, 31, 33, 36, 37, 38,
 39, 40, 41, 44, 46, 47,
 BUILT BY BRITISH

(177)

LOUVRE VENTILATOR WITH DOOR
 AT DIAGONAL CORNERS

LIGHTWEIGHT	34 U.S. TONS
OVERALL WIDTH	32'-8 1/2"
GAUGE	8'-6"
TYPE OF COUPLERS	4'-8 1/2"
TYPE OF BRAKES	HOCK & LINK
EXTREME HEIGHT	HAND & AIR
ACCOMMODATION	12'-10"
	36 STRETCHERS