

OPERATION OF RAILROADS
STANDARD PAINTING,
LETTERING, AND
NUMBERING OF
RAILROAD EQUIPMENT



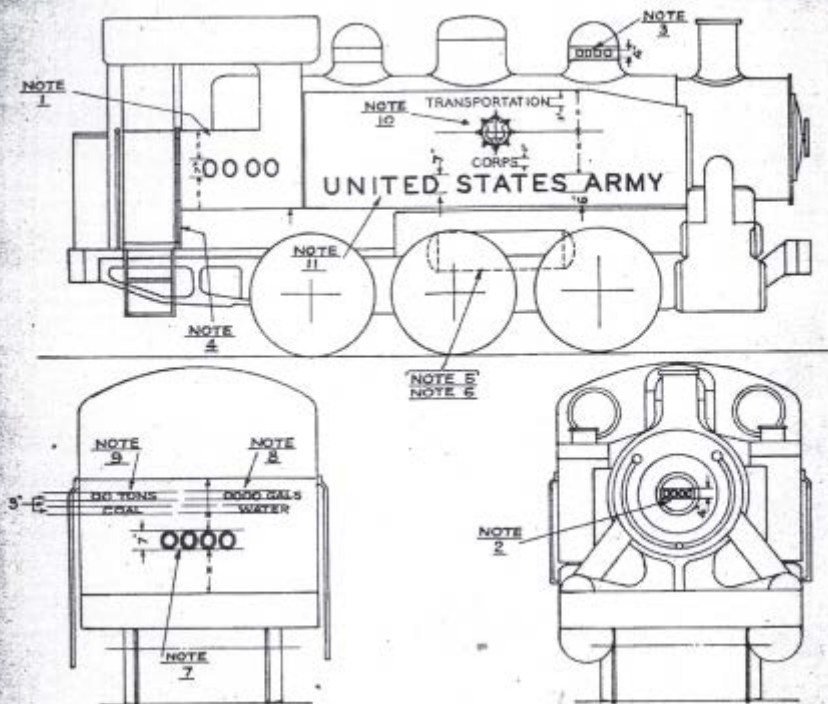


Figure 6. Standard markings for steam locomotives with side and saddle tanks.

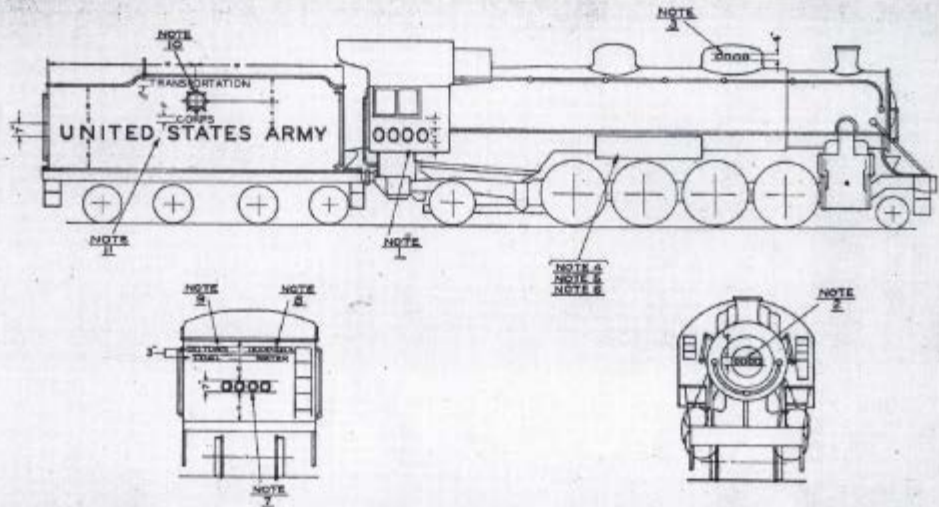
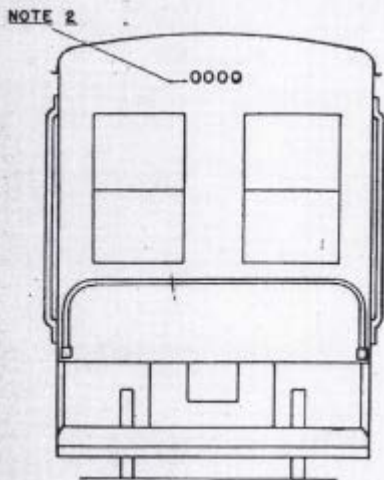
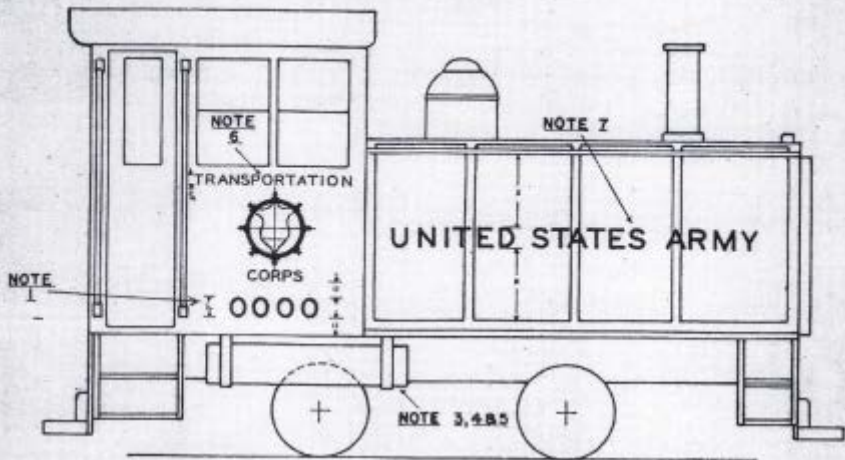


Figure 5. Standard markings for steam locomotive with tender.



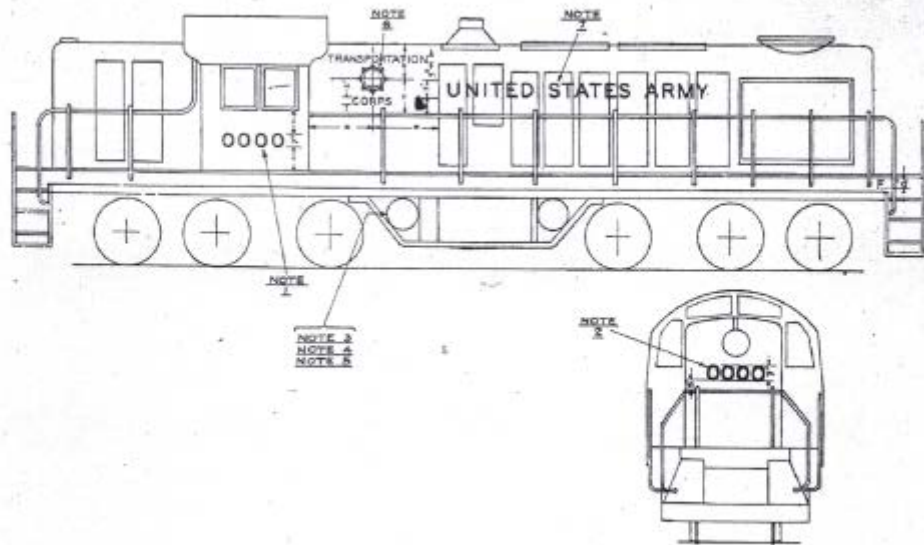


Figure 8. Standard markings for Diesel-electric locomotive with cab located to rear of engine.

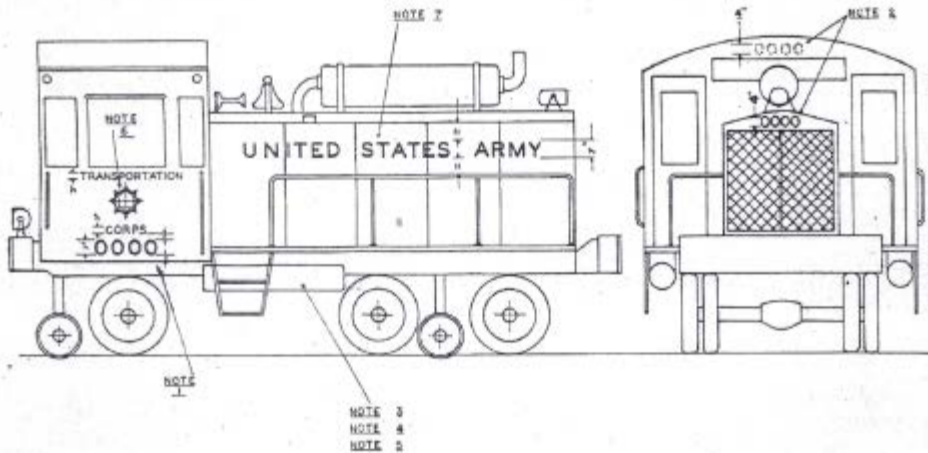


Figure 9. Standard markings for tank car.

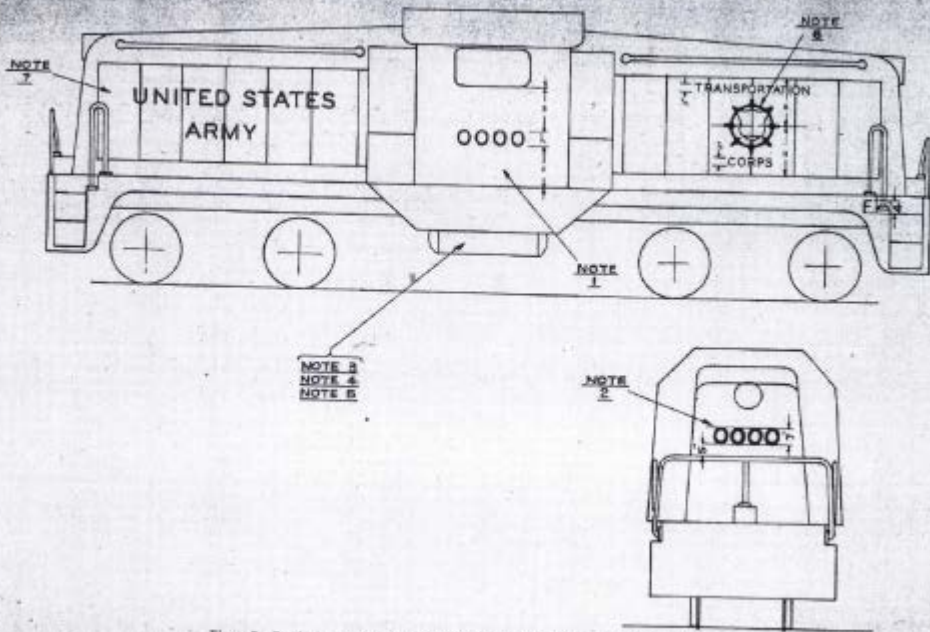


Figure 7. Standard markings for Diesel-electric locomotive with cab located in center.

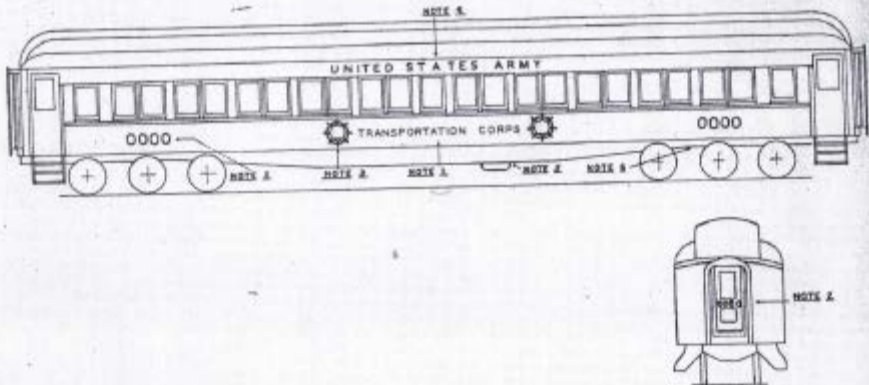


Figure 20. Example of standard markings for passenger cars.

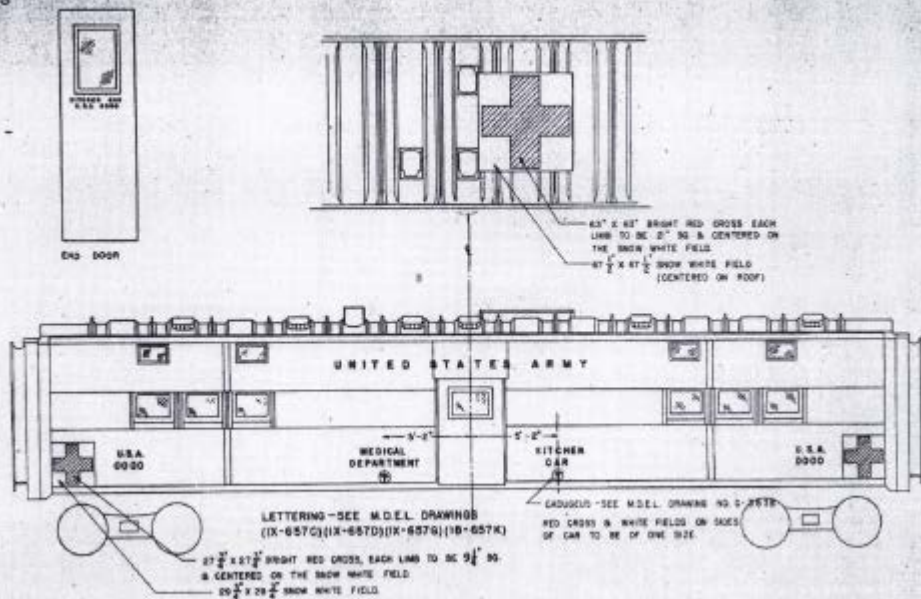


Figure 11. Standard Medical Department markings for hospital kitchen cars.

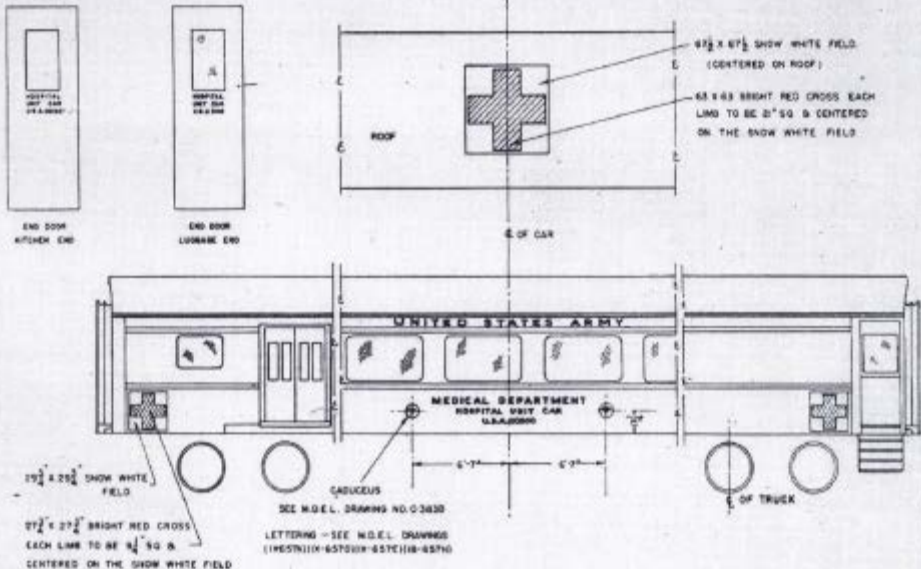


Figure 20. Standard Medical Department markings for hospital unit cars.

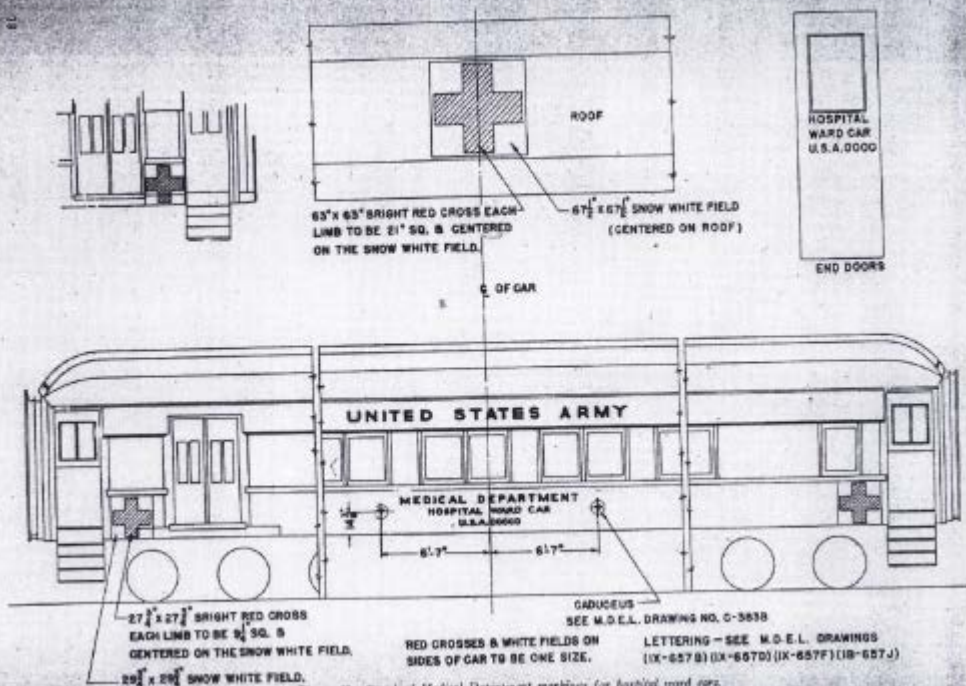


Figure 29. Standard Medical Department markings for hospital ward cars.

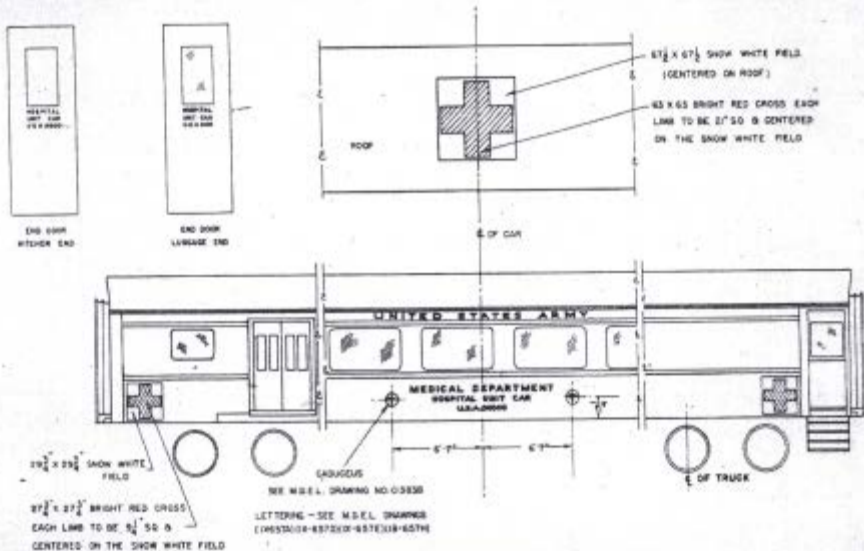
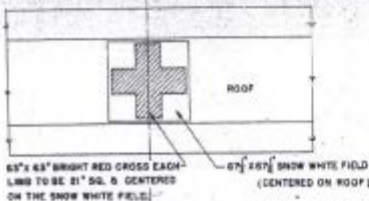
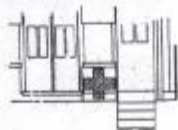


Figure 20. Standard Medical Department markings for hospital unit cars.



OF CAR

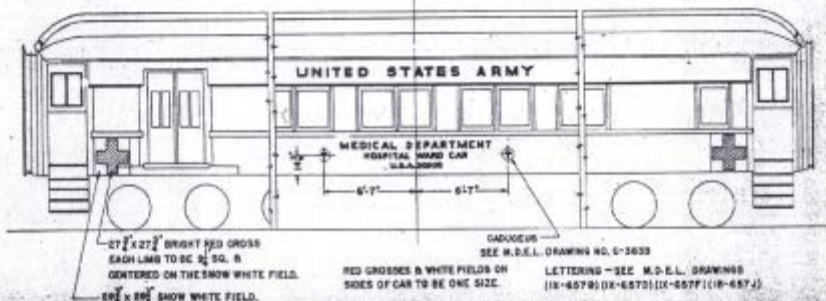


Figure 39. Standard Medical Department drawings for hospital ward cars.

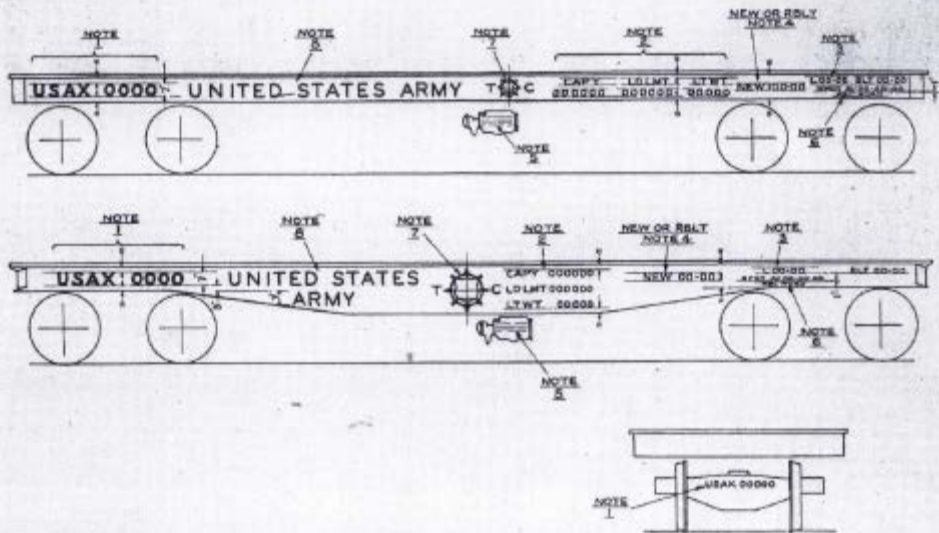


Figure 11. Standard rail cars for flat cars.

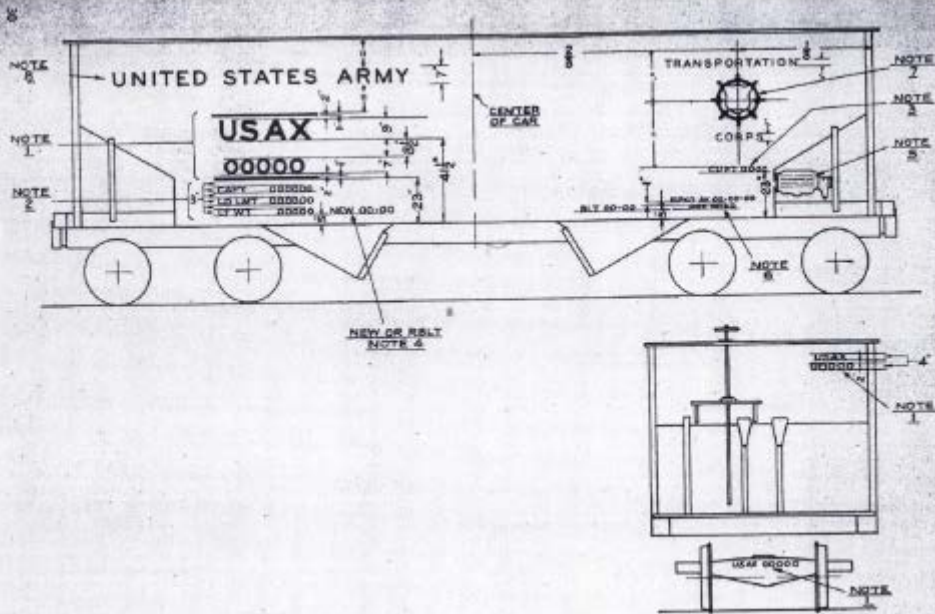


Figure 24. Standard markings for hopper cars.

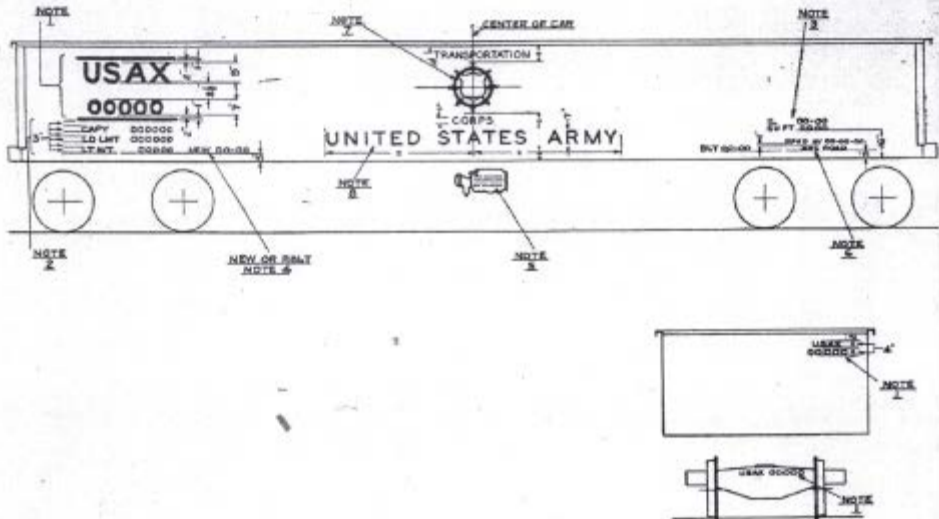


Figure 12. Standard markings for gasoline cars.

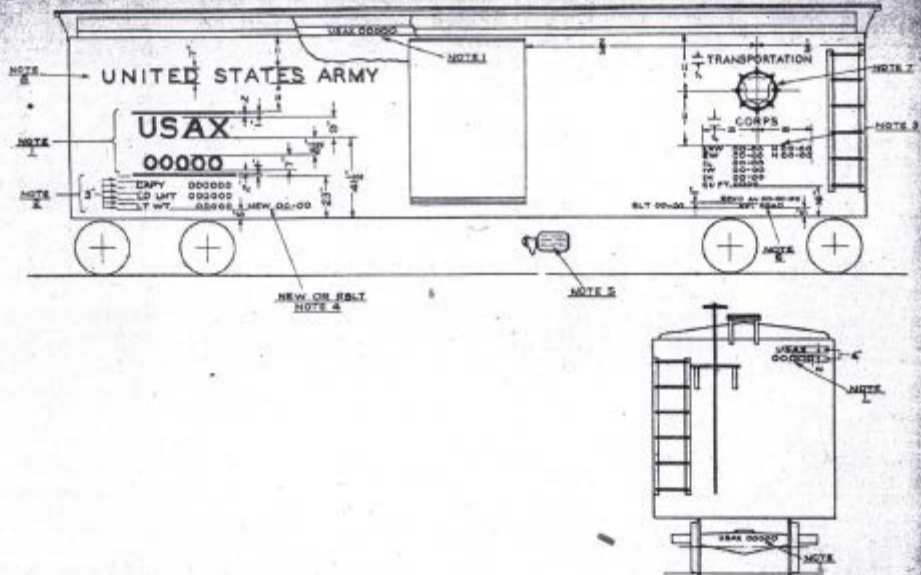


Figure 10. Standard markings for box cars.

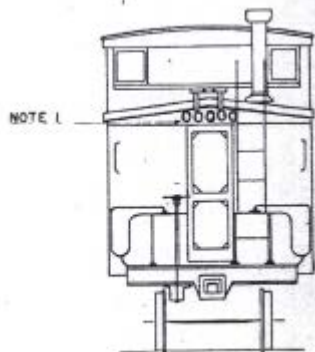
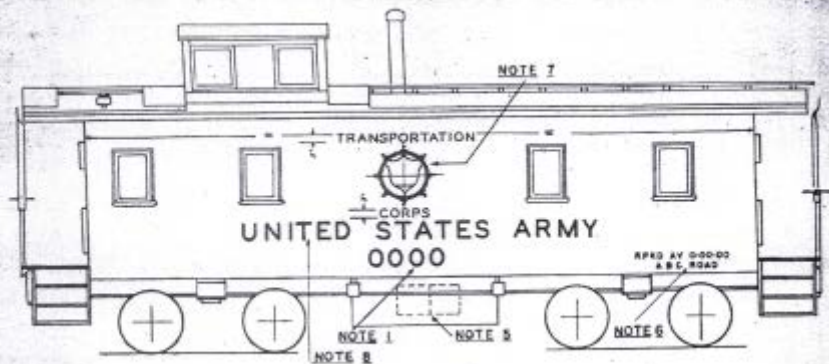


Figure 16. Standard markings for railhouse cars.