

**RAILS  
IN AND AROUND  
LEXINGTON**

# LEXINGTON

KENTUCKY

ON THE ALL-PULLMAN EXTRA-FARE

## QUEEN & CRESCENT

LIMITED



# SOUTHERN

RAILWAY





Burlington

8880  
6245







Old Taylor was the First in Kentucky to reach the Government's  
Serial Case Number of 1,000,000.



A Birds' Eye View on the O. & C. Near Lexington, Ky.





12731

Q. & C. Depot and Yards, Lexington, Ky.





Queen and Crescent Station, Lexington, Ky.



































LEXINGTON FREIGHT STATION  
3-24-14





















































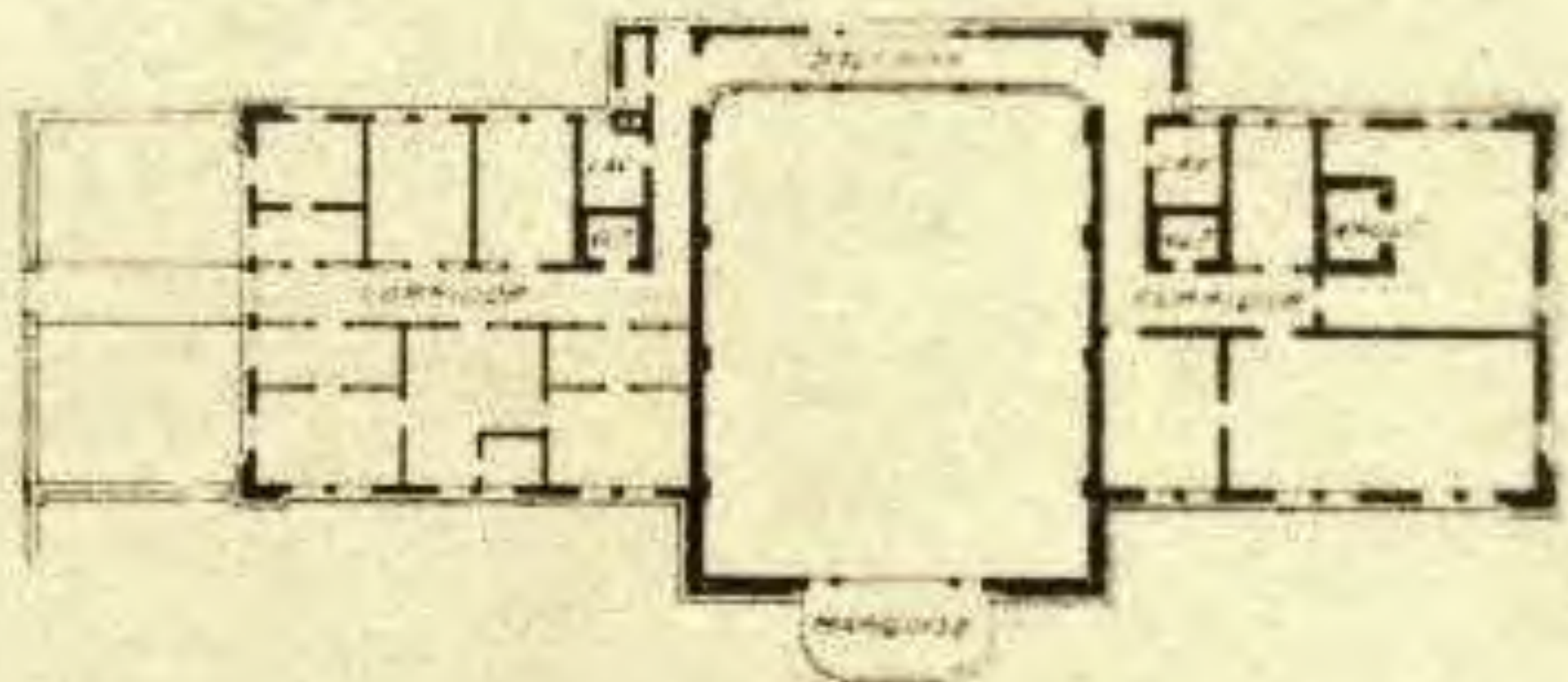
SOLID CARLOAD OF PATTERSON'S TWO BRANDED  
**CURRY, BROWN & SNYDER, LEXINGTON, KY**  
GRAPE, - SHELL ROAD - JERSEY - WILD FIRE





觀外屋木 (一其) 場車停ントシキレ 【流三第國米】





• SECOND FLOOR PLAN •





UNION DEPOT, LEXINGTON, KY.





Lexington, Ky. Union Passenger Station.





NEW UNION STATION,  
THE FINEST IN THE COUNTRY

BRYAN GOODWIN & HUNT, WHOLESALE GROCERS,  
FROM MAIN ST. TO RAILROAD WITH PRIVATE SWITCH

17939

LEXINGTON, KY.













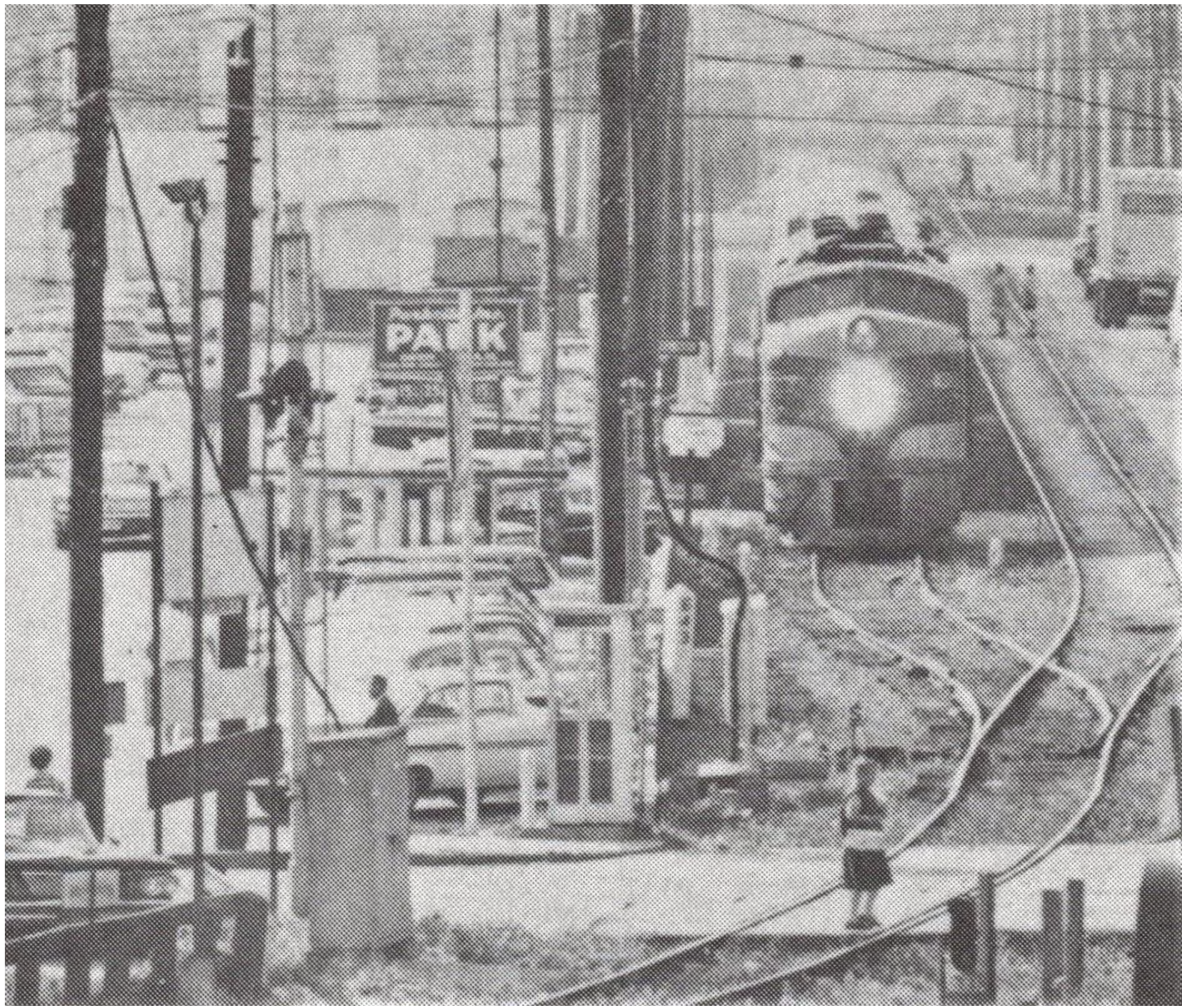












































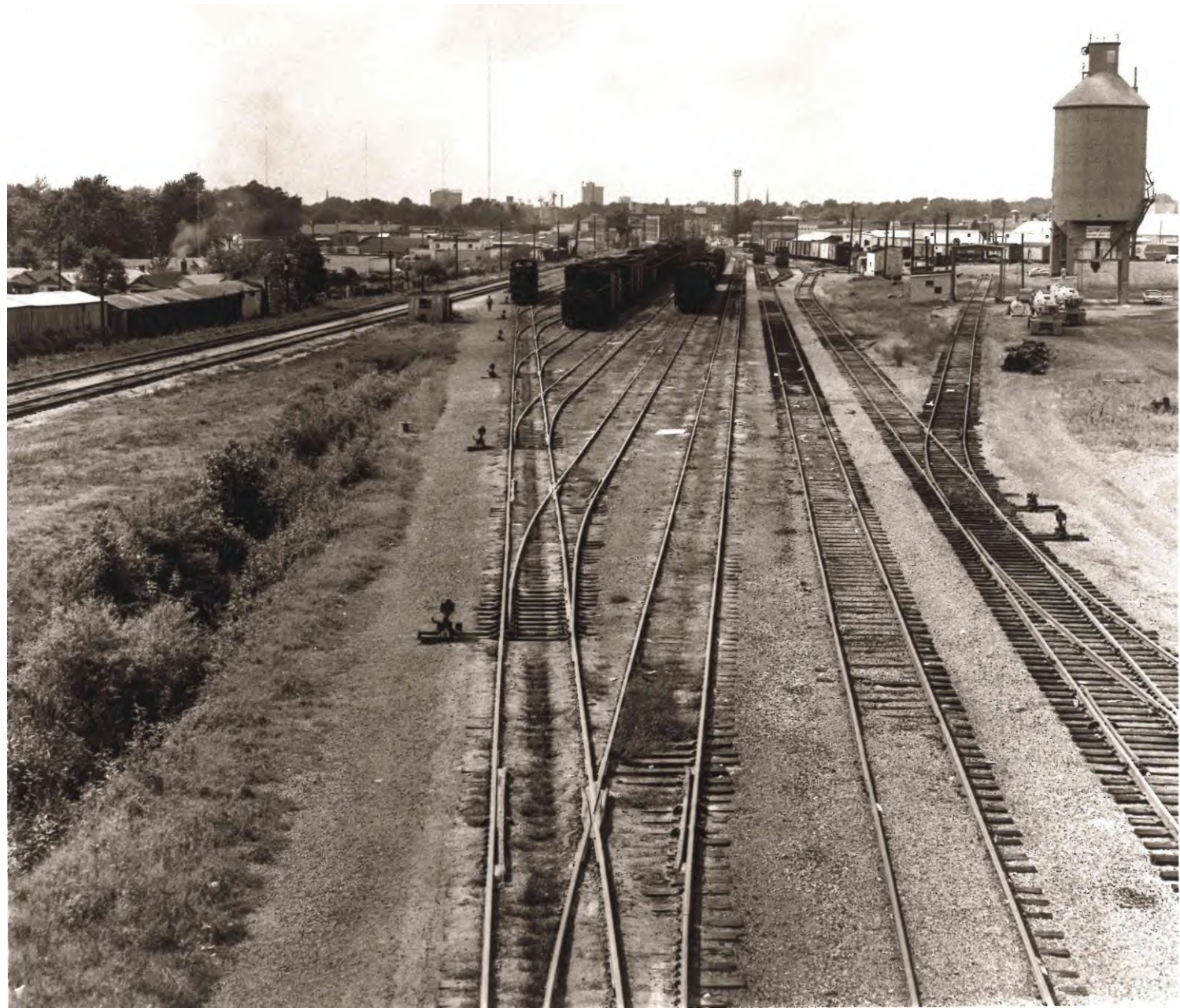
























W.T. CONGLETON CO.  
BUILDING MATERIALS  
PLANT-MIXED  
CONCRETE

W.T. CONGLETON CO.  
BUILDING MATERIALS  
PLANT-MIXED  
CONCRETE















The old L. & N. Bridge over Houston, Paris, Ky.







*L. & N. Bridge, Paris, Ky.*



L. & N. Depot, Paris, Ky.





L. & N. Depot, Paris, Ky.





No. 9232. L. & N. Depot, Richmond, Ky.







L & N Depot, Richmond, Ky. 1911.

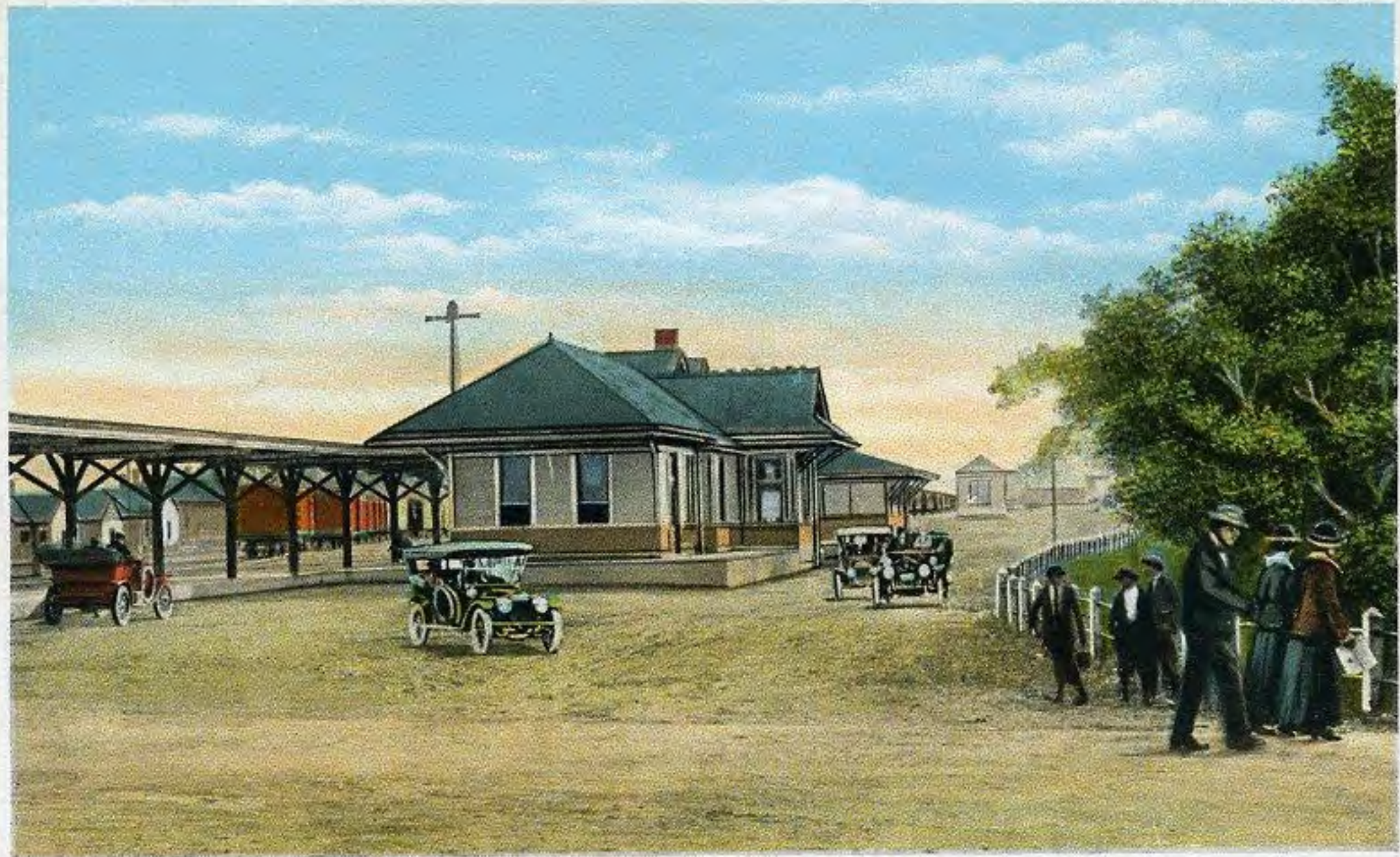


L. & N. R. R. Depot, Richmond, Ky.





ON THE DIXIE HIGHWAY.



L. AND N.R.R. DEPOT, RICHMOND, KY.

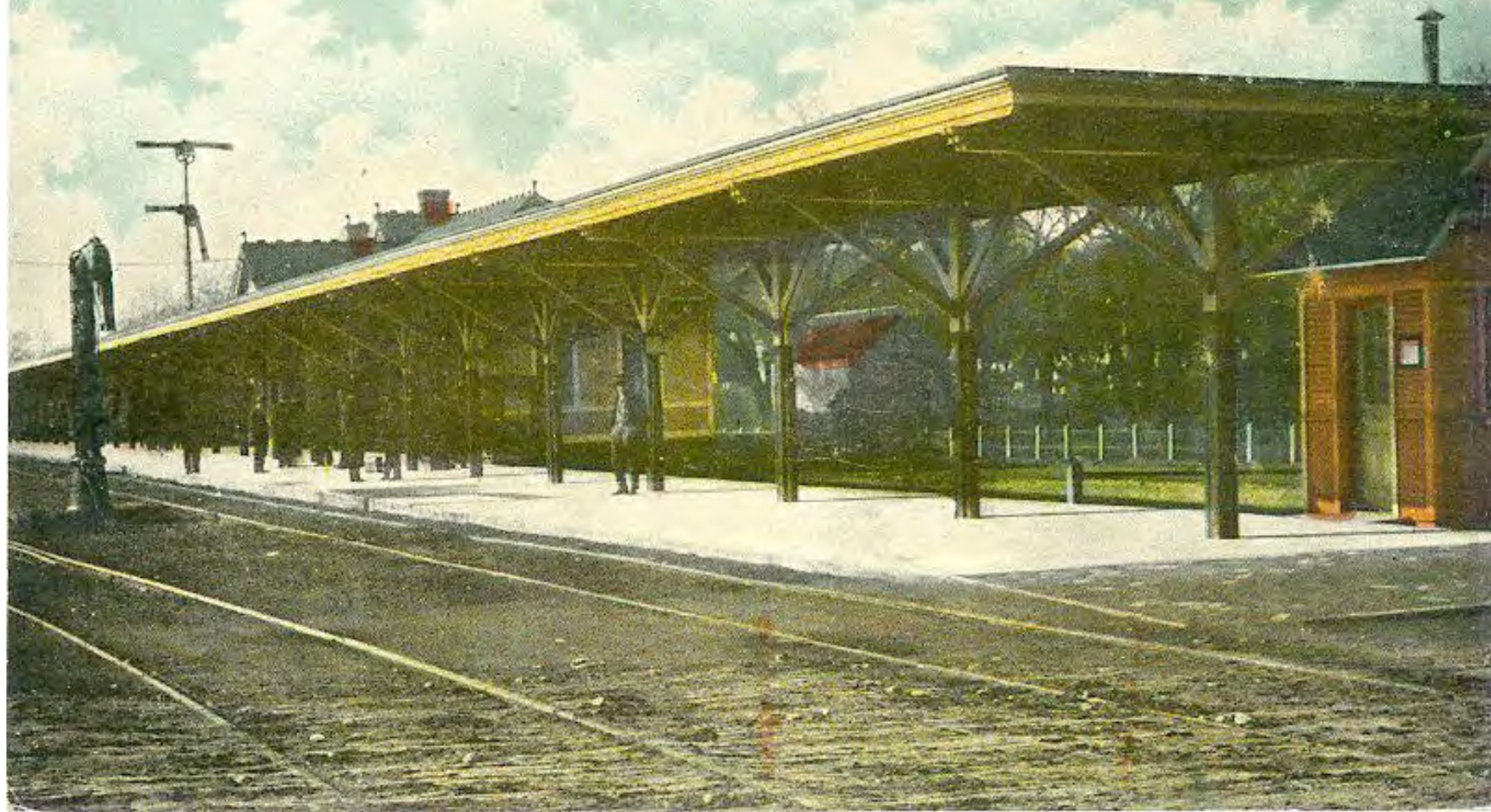


Union Station, Richmond, Ky.





L. & N. Depot, Richmond, Ky.





L. & N. Depot, Richmond, Ky.





L. & N. Depot, Highland, Va.









*L&N DEPOT RICHMOND, KY. 1983*



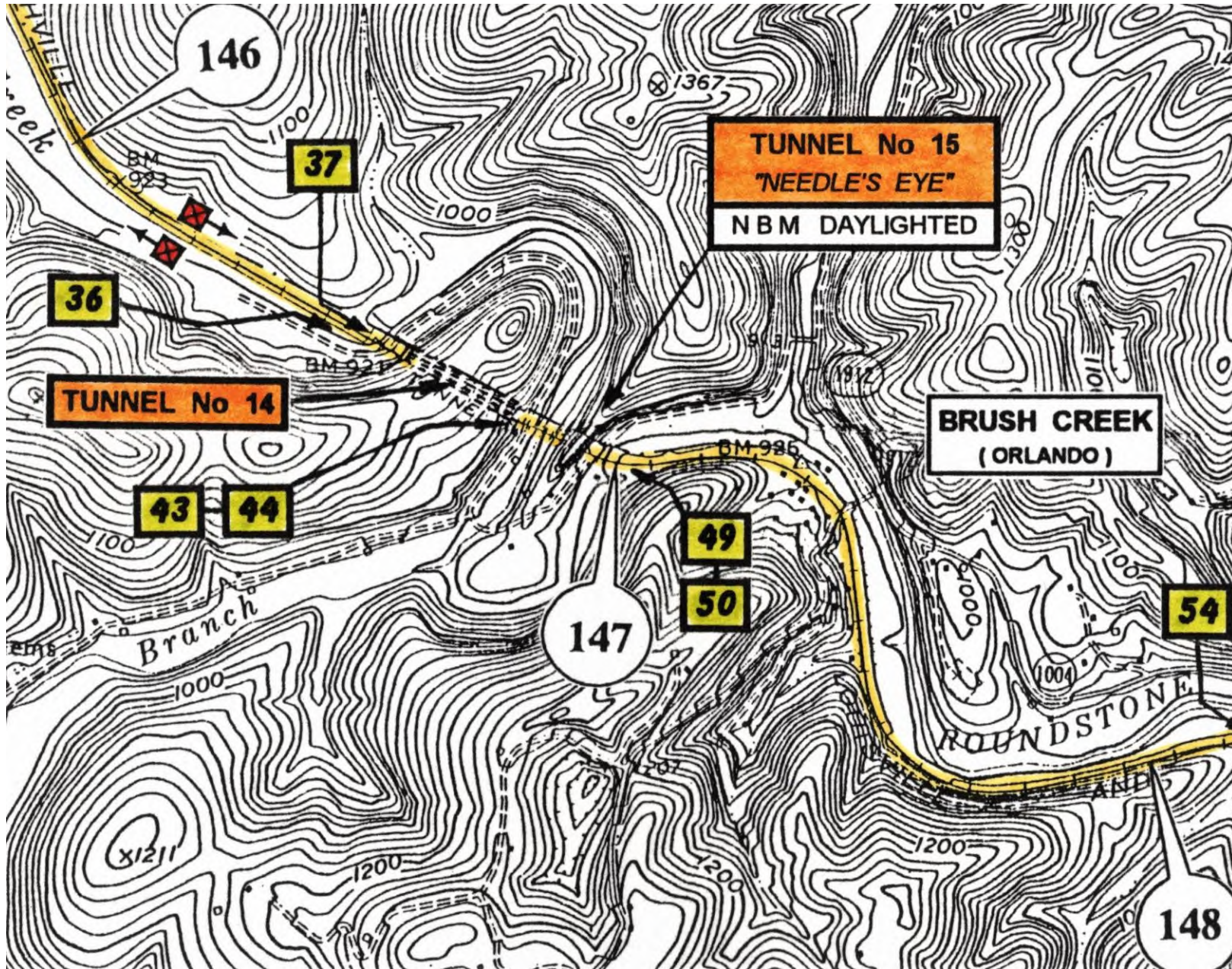






**ORLANDO**  
**KENTUCKY**











































K  
C  
I  
4  
7





















SING  
ROAD



CSX  
NO TRESPASSING

T  
R  
E  
S  
P  
A  
S  
S  
I  
N  
G







Abandoned  
All Hope  
Of This

L&N

CROSSROAD  
RAIL CROSSING

CSX  
NO TRESPASSING





Abandoned  
All Hope  
Of Thee  
LENY

CROSSROAD  
RAIL CROSSING

CSX  
NO TRESPASSING



# **KENTUCKY DERBY TRAINS**





































  
Governor and Mrs. Ernie Fletcher  
Welcome Their  
Economic Development and  
Commerce Guests  






































































Rj Corman  
**RAILPOWER**  
2009

2008

RJ CORMAN  
RAILROAD COMPANY

RJ CORMAN RAILROAD COMPANY  
CENTRAL KENTUCKY LINES

2008







# **DERAILMENT OSBORN YARD**





















CN

UNR

CSXT  
17 24 7

CSX

CS X  
161 6









CSX

Rock City

Handwritten graffiti

2 IN HF COMP SHOES

EXH 15-10  
EXW 13-9  
EW 10-1  
L 8-9  
R 9-7  
CU FT7868

H 15-11  
H 16-7

CS XT  
161 661

SNARL

LT WT

1858 00  
77200

2 IN HF COMP SHOES

PLATE F

Large white graffiti

















UTCX  
46428

7854

CSX

7854

NO RUNNING BOARDS  
EXCESS HEIGHT CAR  
CSXT 172471

PJ CORMAN  
DERAILMENT SERVICES, LLC

25

27





























SAFE

NO RUNNING BOARDS  
EXCESS HEIGHT CAR  
CSXT 172471

END OF CAR CLOSING  
REQUIREMENTS FOR TRAIL  
ALL IN WELLS  
SPRIG D-5

CSXT  
17 24 71

LD LMT  
LT WT  
81000  
81000



RJ CORMAN

RJ CORMAN

RJ CORMAN

RJ CORMAN

WHAT  
YOUR  
FUNCTION

25 25 25

















7854

CS XT

161 661

EXH 16-10  
EXW 10-9  
EW 10-1  
IL 60-9  
IN 9-7  
IN 1-7  
CU FT7368

10 10  
10 10  
10 10

2 IN HF COMP SHOES

SAFETY'S OUR BUSINESS

PJ CORRYAN  
EQUIPMENT SERVICES LLC

185000  
77200





X

EXH 16-10  
EXW 10-9  
EW 10-1  
IL 60-9  
IN 9-7  
IN 1-7  
CU FT 7568

H 15-11  
H 16-7

2 IN HF COMP SHOES

7854

CSXT 15166

FREIGHT MASTER MODEL M-7  
15 ft TRAIL

STACY'S  
QUA

HJ CORMAN  
DEPARTMENT SERVICES, LLC

ATER

HJ CORMAN  
DEPARTMENT SERVICES, LLC









CSX

7854

ROCK

PJ CORN  
DERAILMENT SERVICES, LLC

WHAT'S  
YOUR  
FUNCTION?

EXW 10-10  
EXW 10-9  
EXW 09-9  
N 9-7  
N 1-1  
CN P17986

2 IN THE COMP SHOES





































NO RUNNING BOARDS

EXCESS HEIGHT CAR  
CSXT 172471

END OF CAR CUSHIONING

FREIGHTMASTER ISM TRAVEL

3" IN WHLS

SPRG D-5

CSXT  
1724

RJ CORMAN  
DERAILMENT SERVICES, LLC

25





CSX

TRAINING BRIGADE  
BEST FREIGHT CAR  
CSXT 161661

RGCX  
20202

LD LMT 232900  
LT WT 53100

PLATE  
C

WARNING  
DO NOT APPLY VIBRATOR  
TO ANY PART OF CAR BODY,  
EXCEPT VIBRATOR BRACKETS,  
USE ON LOADED CARS ONLY

CORMAN















FORD, KENTUCKY







# SEE YOU TRACKSIDE STANDING IN THE CLEAR

